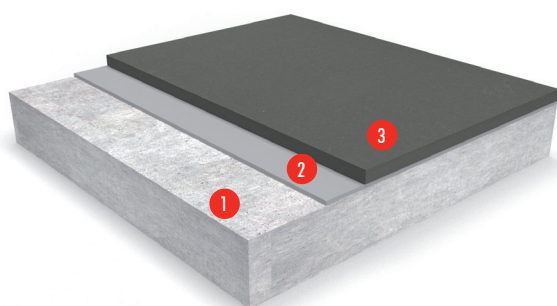


Flowfresh SL Quick (2 mm)

A self-smoothing, medium duty, antimicrobial treated polyurethane resin floor finish.



- 1 Prepared Substrate
- 2 Scratchcoat Quick
- 3 Flowfresh SL Quick



Polygiene®:

Contains a silver ion antimicrobial additive proven to inhibit the growth of most types of harmful bacteria.



Chemical Resistant:

Excellent resistance to sugars and most acids (organic and inorganic).



Wear Resistant:

Holds its own against impact, traffic and chemical attack.



Easy to Clean:

Minimal surface joints make the surface easy to clean and sterilise.

FIRE RESISTANCE	
EN 13501-1	B _{fl} -s1
WEAR RESISTANCE	
EN 13892-4	AR0.5 ($\leq 50 \mu\text{m}$)
BOND STRENGTH	
EN 13892-8	B2.0 ($\geq 2.0 \text{ MPa}$)
IMPACT RESISTANCE	
EN ISO 6272	IR10 (10 Nm)
TEMPERATURE RESISTANCE	
Tolerant to intermittent spillages up to 60°C & Sustained dry heat from -20°C to 50°C.	
COEFFICIENT OF THERMAL EXPANSION	
ASTM C531	$5.70 \times 10^{-5} \text{ mm/mm}^\circ\text{C}$
WATER PERMEABILITY	
Karsten Test	Nil (impermeable)
SLIP RESISTANCE*	
EN 13036-4 (typical values for 4-S rubber slider)	Dry > 50 Wet > 40 low slip potential
COMPRESSIVE STRENGTH	
EN 13892-2	>50 N/mm ²
FLEXURAL STRENGTH	
EN 13892-2	20 N/mm ²
TENSILE STRENGTH	
BS 6319-7	10 N/mm ²

SPEED OF CURE	10°C	20°C	30°C
Light Traffic	15 hrs	10 hrs	5 hrs
Full Traffic	30 hrs	20 hrs	12 hrs
Full Chemical Cure	7 days	6 days	5 days

The figures above are typical properties achieved in laboratory tests at 20°C and at 50% Relative Humidity.

*The slipperiness of flooring materials can change significantly due to the installation process, after short periods of use, due to inappropriate maintenance, longer-term wear and/or surface contaminants (wet or dry). Textured systems are recommended to meet slip resistance value requirements for wet conditions and/ or surface contaminants (wet or dry). Please contact our Technical Department for further details and specifications.

Model Specification

System	Flowfresh SL Quick
Finish	Matt
Thickness	2 mm

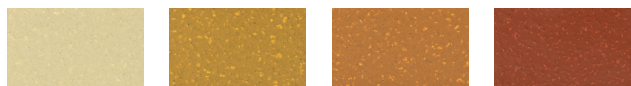
Preparatory work and application in accordance with manufacturer's instructions.

Products Included In This System

Primer	Scratchcoat Quick (Flowfresh SL Quick) @ 1.5 kg/m ²
Topping	Flowfresh SL Quick (density 1.9 kg/l) @ 3.8 kg/m ² for 2mm

Notes: Flowfresh SL quick is a self-sealing finish.
Detailed application instructions are available upon request.

Standard Colours

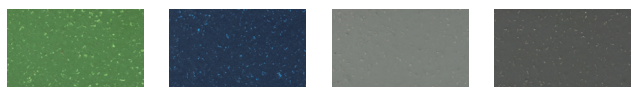


Cream

Ochre

Mustard

Red



Dark Green

Dark Blue

Mid Grey

Dark Grey

The applied colours may differ from the examples shown.
For a full colour chart and samples, contact your local CPG office.

Substrate Requirements

Flowfresh products are not suitable for application onto polymer modified self smoothing screed substrates. Concrete or screed substrate should be a minimum of 25 N/mm², free from laitance, dust and other contamination. The Scratchcoat Quick is also suitable for substrates up to 97% RH as per BS8203 (6.0% on Tramex scale).

Installation Service

The installation should be carried out by a CPG approved contractor with a documented quality assurance scheme. Obtain details of our approved contractors by contacting our customer service team or enquiring via our website www.flowcrete.eu.

Aftercare, Cleaning & Maintenance

Clean regularly using a single or double headed rotary scrubber drier in conjunction with a mildly alkaline detergent.

Note

Flowfresh SL Quick is not colour fast and may change colour over time (exhibits a yellowing effect). Colour change depends on the UV light and heat levels present and hence the rate of change cannot be predicted. This is more noticeable in light colours and blues but does not compromise the product's flexibility or chemical resistance characteristics. We have endeavoured to adopt colours within our standard range which minimise this change. Intensively coloured products (e.g. hair colourants, medical disinfectants etc.) and plasticizer migration (e.g. from rubber tyres) can lead to irreversible discolouration in the surface. Please contact Tremco CPG (Country) for further advice.

Microbial / Fungal Resistance

The Polygiene® antimicrobial additive incorporated into Flowfresh SL Quick provides control of most bacteria and fungi which come into contact with the floor.

Antimicrobial Active Substance	Silver biocide
Tested	ISO 22196 / JIS Z2801

Environmental Considerations

The finished system is assessed as non-hazardous to health and the environment. The long service life and seamless surface reduce the need for repairs, maintenance and cleaning.

Environmental and health considerations are controlled during manufacture and application of the products by CPG staff and fully trained and experienced contractors.

Tremco CPG UK Ltd products are guaranteed against defective materials and manufacture and are sold subject to its standard Terms and Conditions of Sale, copies of which can be obtained on request. Any suggested practices or installation specifications for the composite floor or wall system (as opposed to individual product performance specifications) included in this communication (or any other) from Tremco CPG UK Ltd constitute potential options only and do not constitute nor replace professional advice in such regard. Tremco CPG UK Ltd recommends any customer seek independent advice from a qualified consultant prior to reaching any decision on design, installation or otherwise.

System Datasheet written for Tremco CPG UK Ltd. Please consult Technical Team in your own country region for specific details. [10/11/22, 01 UK]